

Type KVS-03-...

The copy-cam controller KVS is a rugged switching device to IEC 947-5-1 EN 60947 DIN VDE 0660-200 and is designed for packing machines. The free spindle end is intended for a gearwheel, sprocket wheel or for direct coupling to the driven machine. Gearing for matching rotational speed can be supplied (see 3/200).

The work sequence of the machine is "copied". The drum controller is supported in a bearing, is extremely accurate and has a long service life. The contact blocks, micro-switches, proximity initiators (items 15-19) can be replaced individually or can be combined.

The unit is programmed via double cam disks which can be adjusted steplessly and which have a 180° contact deck.

Surface treatment	Primer, top coat: 2 coats of epoxy-resin paint, standard colour RAL 7032 pebble-grey textured varnish
Mechanical life	20 million (operating cycles)
Permissible ambient temperature	Operation -40° C to +60° C Storage -50° C to +80° C

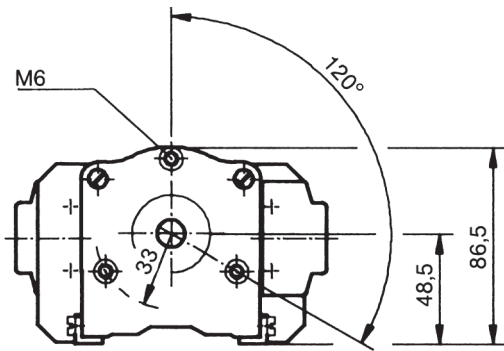
Climate resistance	DIN IEC 68 part 2-3
Damp heat constant	DIN IEC 68 part 2-30
Damp heat cyclic	IP 65 IEC 529 DIN 40050
Degree of protection (in housing)	

Technical data look catalog 5/100, T 104

Proximity initiator	
Type IN 5002-FPKG plus switching	
Type IN 5002-FNKG minus switching	
Connection voltage	18-30 V DC
Current loading	100 mA
Current consumption, not switched	10 mA
Ambient temperature, compensated	-25° C/+80° C
Output: contact-free, short-circuit proof an protected against polarity reversal, switching state displayed via LED	

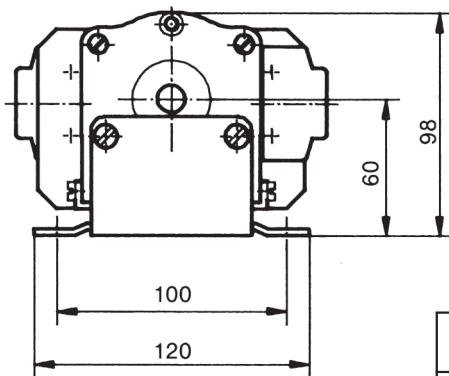
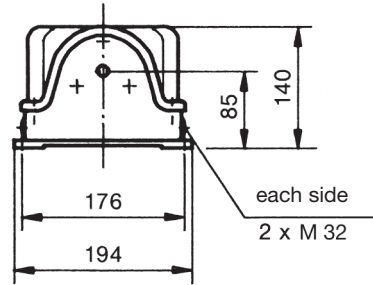
Pos.				Weight kg	Type	Price EURO
1	Copy-cam controller		No. of contacts 3	0,7	01	
2	with free shaft end 12 mm ø		5	0,9	02	
3	without contacts		7	1,1	03	
4	without proximity initiator		9	1,3	04	
5			11	1,5	05	
6	Switching program 180° each contact way		13	1,7	06	
7			15	1,9	07	
8		The program-disks are infinitely adjustable within 360°.	17	2,1	08	
9			19	2,3	09	
10			21	2,5	10	
11			23	2,7	11	
12						
15	Cam operated switch 4 A 350 V AC 15	1 NC	1	0,08	5	
16						
17	Microswitch 8 A 250 V AC 15	1 NC + 1 NO	1	0,08	7	
18	Proximity initiator plus switching	1 NC or 1 NO	1	0,08	8	
19	Proximity initiator minus switching	1 NC or 1 NO	1	0,08	8	
20	Impulse device hall generator 15 Imp./rev via slot disk			0,08	I	
25	Second, free shaftend 12 mm ø				F	
26	Mounting angles 2 pieces each copy-cam controller			0,1	W	
30	Aluminium housing U 15 / 14 IP 54 up to type 03			1,7	U1	
31						
32	Aluminium housing U 15 / 30 IP 54 up to type 11			2,9	U3	



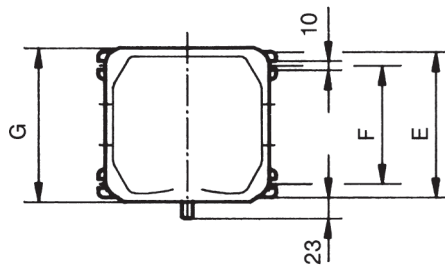


Mounting at the top

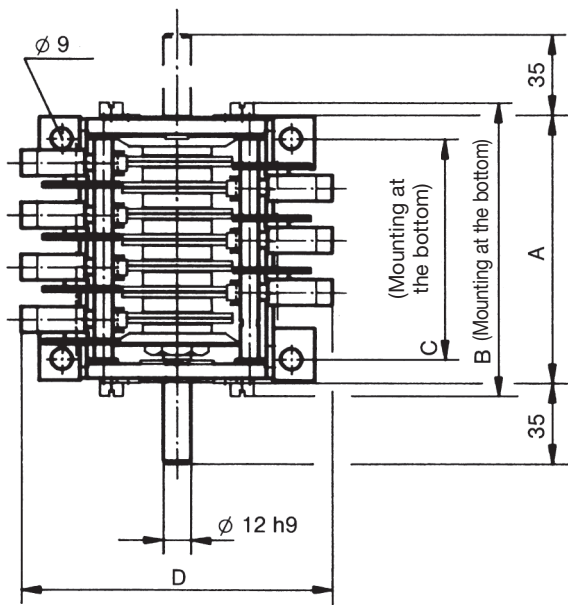
U 15 / ..  
Protection IP 54



Mounting at the bottom  
(with mounting angles)



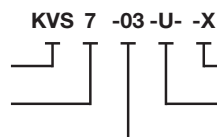
U 15 / ..	Dimension E	Dimension F	Dimension G
/14	160	130	169
/30	320	290	329



Type	No. of contact	Dimension A	Dimension B	Dimension C
01	3	72	87	51
02	5	95	110	74
03	7	118	133	97
04	9	141	156	120
05	11	164	180	143
06	13	187	202	166
07	15	210	225	189
08	17	233	248	212
09	19	256	271	235
10	21	279	294	258
11	23	302	317	281

Type	Dimension D	Screw-connection
KVS 5	125	M 4
KVS 7	145	M 3
KVS 8	140	M 3

Example for type-sign  
Copy-cam controller  
No. of contacts  
Contact-type



Special please describe  
Aluminium housing