

Type S6L-03ZP-...

The single-axis controller S 6 is a rugged switching device according IEC 947-5-1 EN 60947 DIN VDE 0660-200 for hoisting applications. The modular design enables the switching device to be used universally. The S 6 is resistant to oil, maritime climate, ozone and UV radiation.

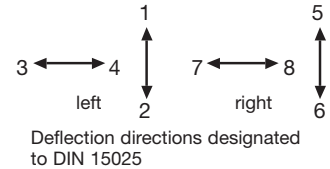
Contact complement 2 A 250 V AC 15 res. 1 A 24 V DC 13 (standard) or 4 A 250 V AC 15 (special)

Mechanical life 10 million (operating cycles)
 Permissible ambient temperature Operation -40° C to +60° C
 Storage -50° C to +80° C

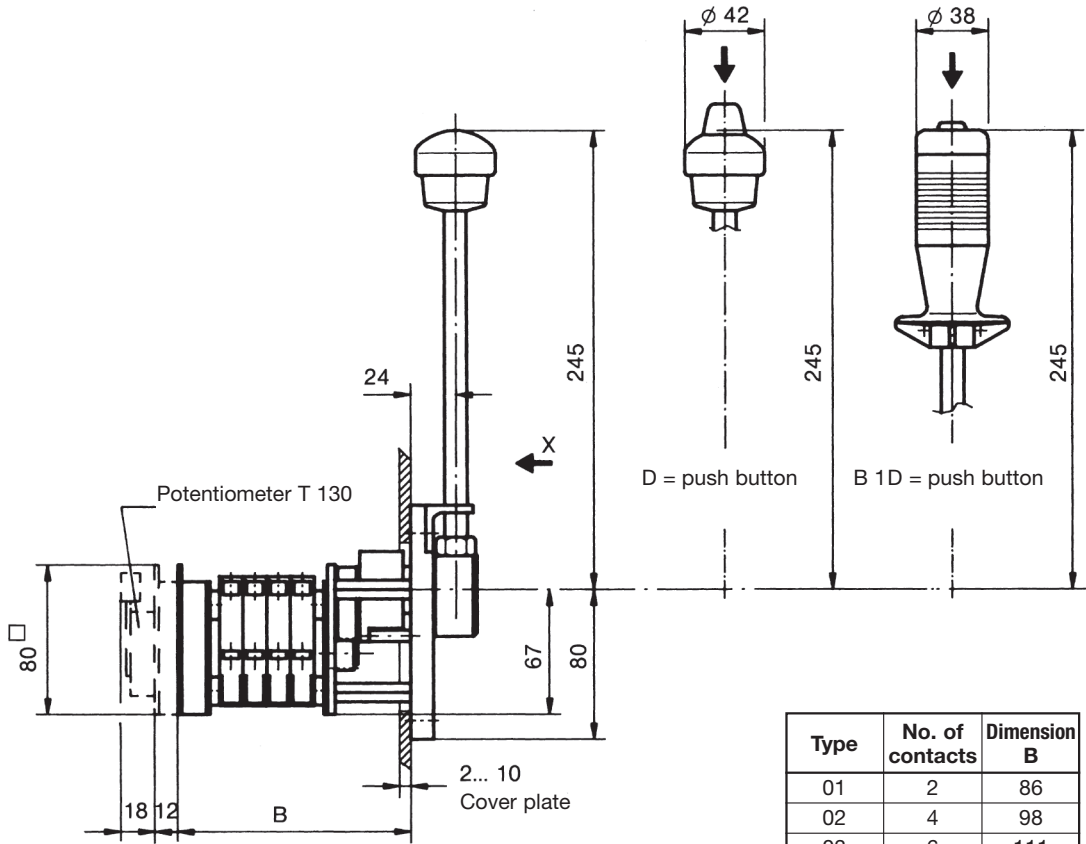
Climate resistance
 Damp heat constant DIN IEC 68 part 2-3
 Damp heat cyclic DIN IEC 68 part 2-30
 Degree of protection front IP 54 IEC 529 DIN 40050

Technical data see catalog 5/100
 Description data see catalog 5/002

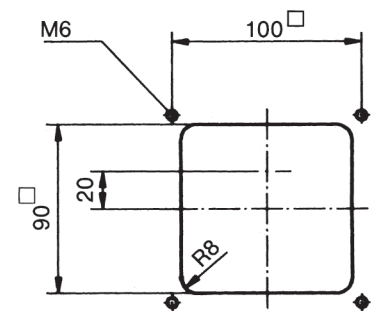
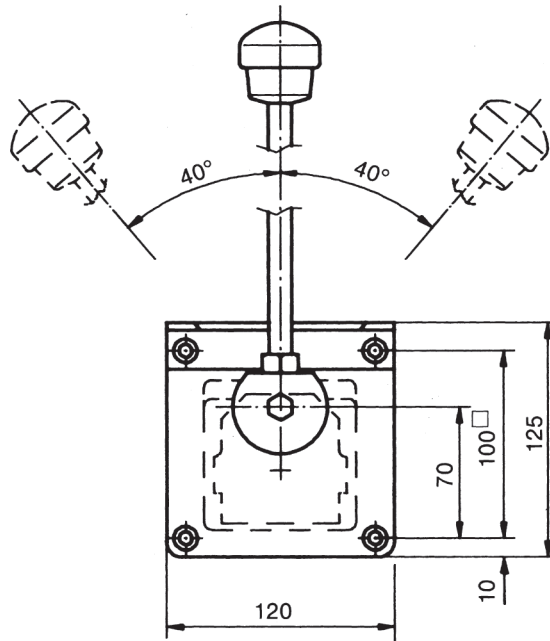
Spindle block with schematic representation of the master controller installation and deflection directions.
 Version shown for left-hand side installation (right-hand side installation is mirror image).



Pos.	S 6	Type expansion		Weight gramm	Type	Price EURO
1				960	S 6	
2						
3						
4						
5						
7.1		Single-axis controller left (dir. 1-2, 3-4)				L
7.2	Single-axis controller right (dir. 5-6, 7-8)				R	
10						
20						
21						
22						
23						
24	Control-handle with push button 1 NO with flexible cable			110	D	
25						
26	Control-handle with palm grip B 1			40	B 1	
27	Control-handle with palm grip B 1 with push button top 1 NO			60	B 1D	
28	Control-handle long or short					
28.1	-20 mm				S5	
28.2	+20 mm				S8	
30	Masterswitch (contact set) switching sequenc 4-0-4		No. of contacts 2	290	01	
31			4	350	02	
32	Direction 1-2 or 3-4		6	410	03	
33	Switching program according contact-arrangement MS... see catalog 5/001	A...	8	470	04	
34	or to your contact-arrangement		10	530	05	
35			12	590	06	
36	Switching sequence 5-0-5 or 6-0-6					
38	Spring return in 0-position (for each direction)			110	Z	
39	Friction brake adjustable (for each direction)			30	R	
40	Potentiometer e.t.c. each masterswitch with mounted Wire-wound potentiometer T 130, with centre tap, 1,5 Watt wiper current max. 10 mA resistance 2 x 0,5k \cong P021, 2 x 1k \cong P022, 2 x 2k \cong P023, 2 x 5k \cong P024, 2 x 10k \cong P025	...P02 \square		70	P	
41	Prepared for mounting potentiometer shaft 6 mm adjusting-angle 2 x 150°				(P)	
42	Prepared for mounting potentiometer e.t.c. adjusting-angle variable.				(P)	
43	more Potentiometer e.t.c. see catalog 1/240...	C..., P...				
50						
51						
52	More housing see catalog 1/350					
60	Indicating labels not engraved with 2 arrows					
61	Engraving, each 10 characters					
70	Command and indicating devices see catalog 1/360					



Type	No. of contacts	Dimension B
01	2	86
02	4	98
03	6	111
04	8	123
05	10	136
06	12	148



Hole pattern

