

Type S2LD-03ZP-...

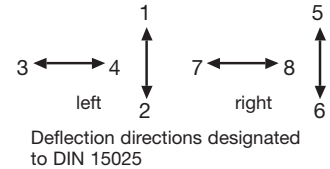
The single-axis controller S 2 is a rugged switching device according IEC 947-5-1 EN 60947 DIN VDE 0660-200 for electro-hydraulic applications. The modular design enables the switching device to be used universally. The S 2 is resistant to oil, maritime climate, ozone and UV radiation.

**Contact complement 2 A 250 V AC 15 res. 3 A 24 V DC 13**

Mechanical life S 2 6 million (operating cycles)  
 Mechanical life SS 2 10 million (operating cycles)  
 Permissible ambient temperature Operation -40° C to +60° C  
 Storage -50° C to +80° C

Climate resistance  
 Damp heat constant DIN IEC 68 part 2-3  
 Damp heat cyclic DIN IEC 68 part 2-30  
 Degree of protection front IP 54 IEC 529 DIN 40050  
 Technical data see catalog 5/100  
 Description data see catalog 5/002

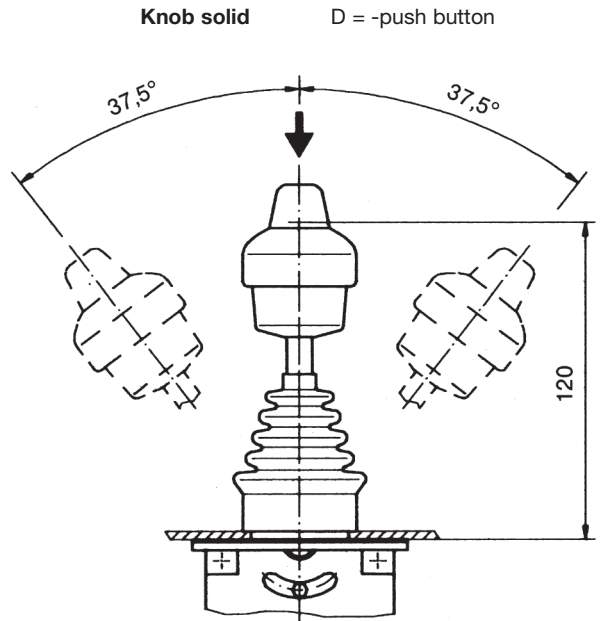
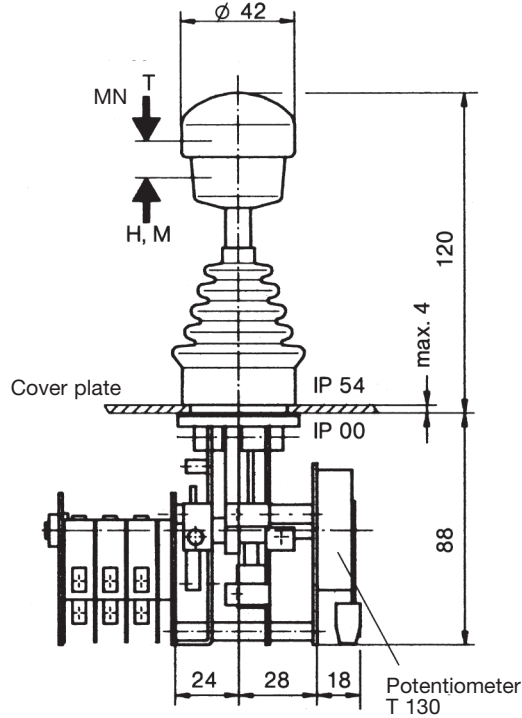
Spindle block with schematic representation of the master controller installation and deflection directions.  
 Version shown for left-hand side installation (right-hand side installation is mirror image).



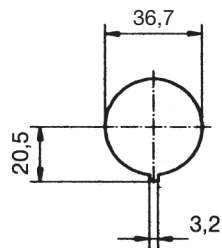
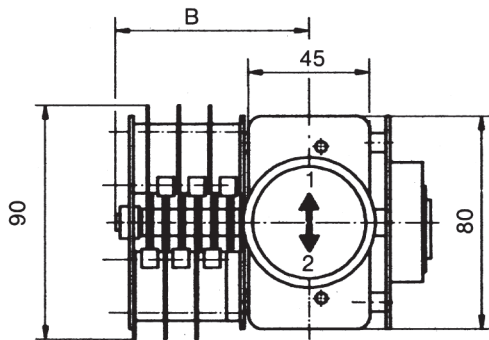
Pos.	S 2	Type expansion	Weight gramm	Type	Price EURO	
1			600	S 2		
2			650	SS 2		
3						
4						
5						
7.1	Single-axis controller left (dir. 1-2, 3-4)			L		
7.2	Single-axis controller right (dir. 5-6, 7-8)			R		
11	Gate special-shaped (for position view) M 1699		60	P		
20	Control-handle with knob solid					
21	Control-handle with latch for mechanical zero interlock					
21.1	by lifting		50	M		
21.3	by pushing down		50	MN		
21.4	Mechanical zero interlock with command devices see catalog 1/282					
22	Control-handle with dead man's button 1 NO		50	T		
23	Control-handle with signal button 1 NO		50	H		
24	Control-handle with push button 1 NO		60	D		
25	Control-handle with flat push button 1 NO		60	DV		
26	Control-handle with palm grip B 5		40	B 5		
27	Control-handle with palm grip B 5 with push button top 1 NO		60	B 5T		
28	Control-handle long or short					
28.1	-20 mm			S5		
28.2	+20 mm			S8		
29	More knobs, grips and T-grips with and without signal devices see catalog 1/280...					
30	Masterswitch (contact) switching sequenc 5-0-5		No. of contacts 3	02		
31			5	03		
32			7	04		
33	Switching program according contact-arrangement MS... see catalog 5/001	A...	9	05		
34	or to your contact-arrangement					
35						
37	Micro change over contact (MZT1) positive opening (additional price)		1			
38	Spring return in 0-position (for each direction)			Z		
39	Friction brake adjustable (for each direction)			R		
40	Potentiometer e.t.c. each masterswitch with mounted Wire-wound potentiometer T 130, with centre tap, 1,5 Watt wiper current max. 10 mA resistance 2 x 0,5k $\pm$ P021, 2 x 1k $\pm$ P022, 2 x 2k $\pm$ P023, 2 x 5k $\pm$ P024, 2 x 10k $\pm$ P025	...P02 $\square$		70	P	
41	Prepared for mounting potentiometer shaft 6 mm adjusting-angle 2 x 150°				(P)	
42	Prepared for mounting potentiometer e.t.c. adjusting-angle variable.				(P)	
43	more Potentiometer e.t.c. see catalog 1/240...	C..., P...				
50	Steel sheet housing B 200 masterswitch Gr. 05			1300	B	
52	More housing see catalog 1/350					
60	Indicating labels not engraved with 2 arrows					
61	Engraving, each 10 characters					
70	Command and indicating devices see catalog 1/360					



T = dead man's button  
H = signal button  
M = latch for mechanical zero interlock



Type	No. of contacts	Dimension B
02	3	62
03	5	72
04	7	83
05	9	93



Hole pattern

Palm grip B 5

