



Type S14L-01ZP-...

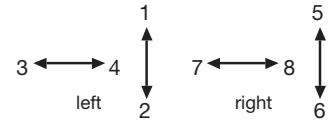
The single-axis controller S 14 is a rugged switching device according IEC 947-5-1 EN 60947 DIN VDE 0660-200 for remote control and hoisting applications. The S 14 is resistant to oil, maritime climate, ozone and UV radiation.

Contact complement 2 A 250 V AC 15 res. 1 A 24 V DC 13

Mechanical life 6 million (operating cycles)
Permissible ambient temperature Operation -40° C to +60° C
Storage -50° C to +80° C

Climate resistance
Damp heat constant DIN IEC 68 part 2-3
Damp heat cyclic DIN IEC 68 part 2-30
Degree of protection front IP 65 IEC 529 DIN 40050
Technical data see catalog 5/100
Description data see catalog 5/002

Spindle block with schematic representation of the master controller installation and deflection directions. Version shown for left-hand side installation (right-hand side installation is mirror image).

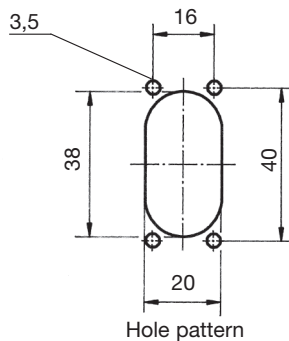
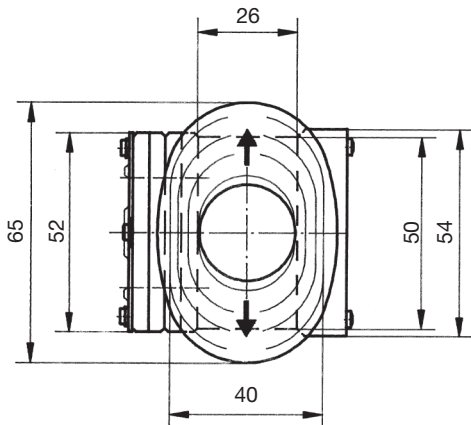
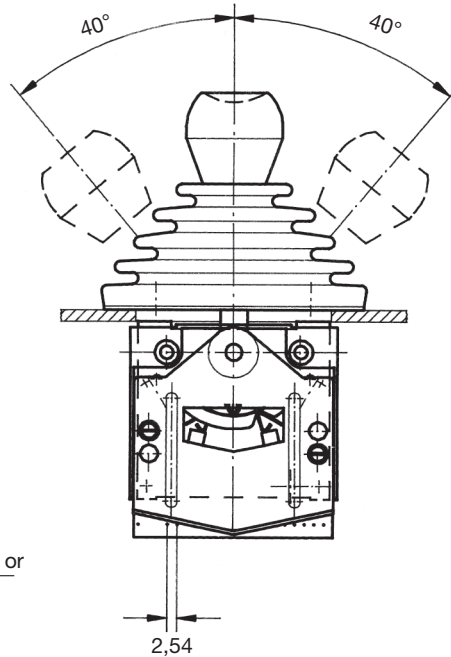
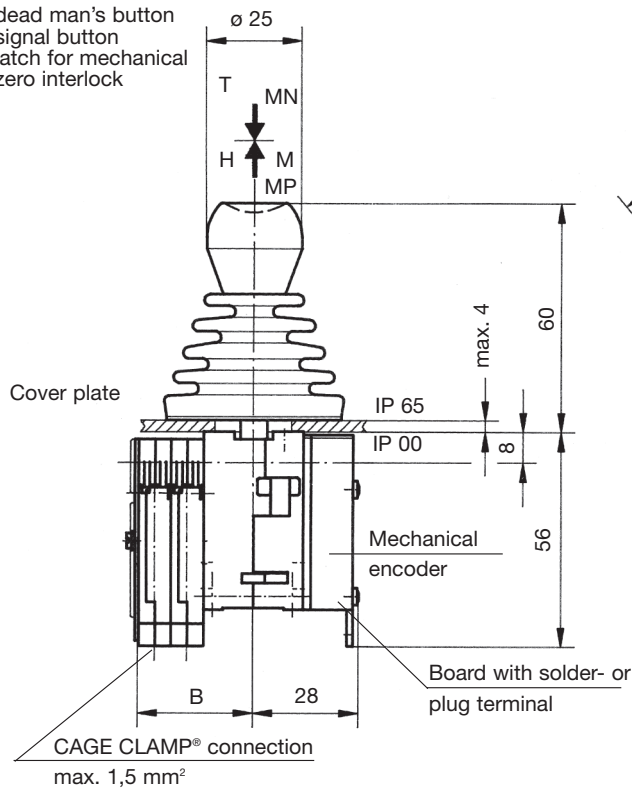


Deflection directions designated to DIN 15025

Pos.	S 14	Type expansion		Weight gramm	Type	Price EURO
1				150	S 14	
2						
3						
4						
5						
7.1	Single-axis controller left (dir. 1-2, 3-4)				L	
7.2	Single-axis controller right (dir. 5-6, 7-8)				R	
10						
20	Control-handle with knob solid					
21	Control-handle with latch for mechanical zero interlock					
21.1	by lifting			50	M	
21.2	by lifting, interlocking in the joint bracket			60	MP	
21.3	by pushing down			50	MN	
21.4	Mechanical zero interlock with command devices see catalog 1/282					
22	Control-handle with dead man's button 1 NO			80	T	
23	Control-handle with signal button 1 NO			80	H	
28	Control-handle long +20 mm				S8	
29	More knobs, grips and T-grips with and without signal devices see catalog 1/280...					
30	Masterswitch (contact set) switching sequenc 4-0-4 adjustable (with encoder 6-0-6)		No. of contacts 2	70	01	
31			4	130	02	
32	Direction 1-2 or 3-4		6	190	03	
33	Switching program according contact-arrangement MS... see catalog 5/001 or to your contact-arrangement	A...				
34						
38	Spring return in 0-position (for each direction)				Z	
39	Friction brake adjustable (for each direction)				R	
44	Mechanical encoder with mounted direction 1-2 or 3-4 life 5 x 10 ⁸ switching cycles, 0,5 Watt wiper current max. 1 mA Mechanical encoder MEC 1-2 male connector EA/02-10 contact-arrangement MS 26-0 see catalog 5/001 Conductive-plastic potentiometer with centre tap linear resistance 2 x 10 kOhm	C 61		30	C	
45	Mechanical encoder MEC 1-7 male connector EA / 10-10 contact-arrangement MS 26-0-1 see catalog 5/001 Conductive-plastic potentiometer with centre tap linear resistance 2 x 5 kOhm	C 62		20	C	
46	Mechanical encoder MEC 1-6 male connector EA / 09-10, 6 Bit Gray-Code	C 63		30	C	
47	Mechanical encoder MEC 1-6-5 male connector ER / 36-10 Power supply 24 V DC, output power impressed 4-20 mA	C 64		30	C	
48	Mechanical encoder MEC 1-6-8 male connector ER / 36-12 Power supply 24 V DC, output power impressed 0-20 mA	C 65		30	C	
49	Mechanical encoder MEC 1-10 male connector EA / 17-10 contact-arrangement MS21-0 + MS21 see catalog 5/001 Conductive-plastic potentiometer with centre tap Linear resistance 2 x 1,5 kOhm	C 66		30	C	
52	Housing see catalog 1/350					
60	Indicating labels not engraved with 2 arrows					
61	Engraving, each 10 characters					
70	Command and indicating devices see catalog 1/360					



T = dead man's button
H = signal button
M = latch for mechanical zero interlock



Type	No. of contacts	Dimension B
01	2	24
02	4	33
03	6	42

