

Type D8LQD-2ZP+2ZP-B...

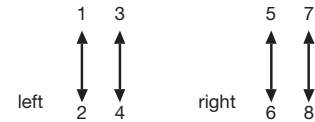
The double-handle controller D 8 is a rugged switching device according IEC 947-5-1 EN 60947 DIN VDE 0660-200 for electro-hydraulic applications. The modular design enables the switching device to be used universally. The D 8 is resistant to oil, maritime climate, ozone and UV radiation.

Contact complement 0,5 A 110 V AC 15 res. 1,5 A 24 V DC 13
I min > 0,2 mA 2 V DC 12 Gold plated for max. load of 0,12 Watt (standard)
or I max < 300 mA 0,4 V DC 12 max. capacity 0,12 Watt do not exceed!
I min >0,2 mA 2 V DC 12 max. contact reliability for very low current (special)

Mechanical life 8 million (operating cycles)
 Operation -40° C to +60° C
 Storage -50° C to +80° C

Climate resistance
 Damp heat constant DIN IEC 68 part 2-3
 Damp heat cyclic DIN IEC 68 part 2-30
 Degree of protection front IP 54 IEC 529 DIN 40050
 Technical data see catalog 5/100
 Description data see catalog 5/002

Spindle block with schematic representation of the master controller installation and deflection directions.
 Version shown for left-hand side installation (right-hand side installation is mirror image).



Deflection directions designated to DIN 15025

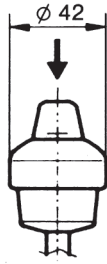
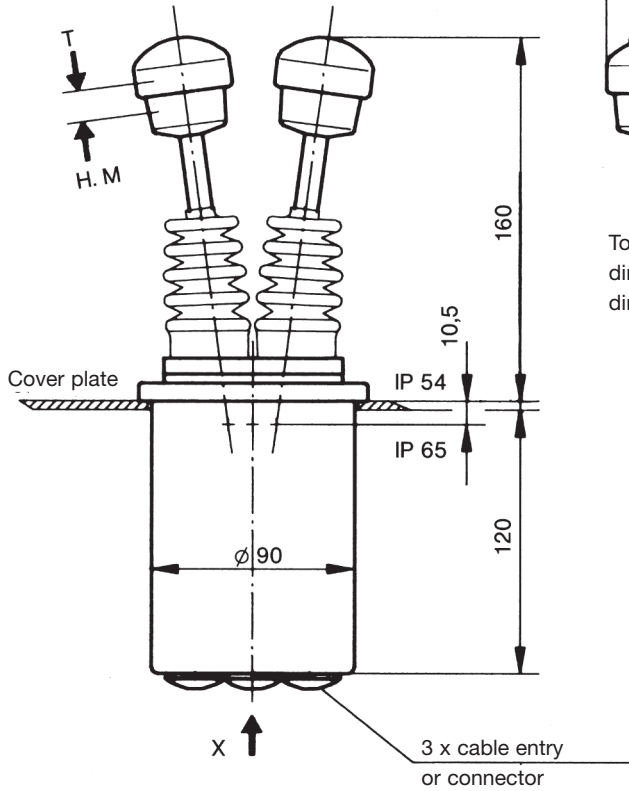
Pos.	D 8	Type expansion	Weight gramm	Type	Price EURO	
1						
2						
3			1000	D 8		
4						
5						
7.1	Double-handle controller left (dir. 1-2, 3-4)			L		
7.2	Double-handle controller right (dir. 5-6, 7-8)			R		
10						
20	Control-handle with knob solid	(for each direction for Pos. 20-28)				
21	Control-handle with latch for mechanical zero interlock by lifting		50	M		
22	Control-handle with dead man's button 1 NO		100	T		
23	Control-handle with signal button 1 NO		100	H		
24	Control-handle with push button 1 NO		110	D		
25	Control-handle with flat push button 1 NO		110	DV		
26	Control-handle with T-grip		40	Q		
27	Control-handle with T-grip and push button side 1 NO		60	QD		
28	Control-handle long or short					
28.1	-20 mm			S5		
28.2	+20 mm		S8			
29	More knobs, grips and T-grips with and without signal devices see catalog 1/280...					
30	Masterswitch (contact) switching sequenc -0-	A...	No. of contacts 1	20	1	
31			2	40	2	
32	Direction 1-2 and 3-4 each 1 masterswitch		3	60	3	
33	Switching program according contact-arrangement MS... see catalog 5/001					
34	or to your contact-arrangement					
36	Switching sequence 3-0-3					
38	Spring return in 0-position (for each direction)		30	Z		
39	Friction brake adjustable (for each direction)		30	R		
40	Potentiometer e.t.c. each masterswitch with mounted Conductive-plastic potentiometer T 301, with centre tap linear 0,5 Watt wiper current max. 1 mA resistance 2 x 1k \pm P182, 2 x 5k \pm P184	...P18 \square	70	P		
41	Prepared for mounting potentiometer shaft 6 mm adjusting-angle 2 x 120°	P...		(P)		
42	Prepared for mounting potentiometer e.t.c. adjusting-angle variable.			(P)		
43	more Potentiometer e.t.c. see catalog 1/240...					
45	Electronic (Amplifier, Profi-Bus, CAN-Bus) see catalog 3/510/...	E...				
50	Cover housing		300	B		
51	Filter plug M 20 for air-condition		20			
52	Cable entry M 20 with anti-kink protection and strain relief		30			
53	Plug in socket 14-pole female insert CPC 17 wired		150			
54	Connector 14-pole male insert CPC 17 unwired		150			
55	Wiring plug in socket or connector each wired-connection					
60	Indicating labels not engraved with 2 or 4 arrows					
61	Engraving, each 10 characters					



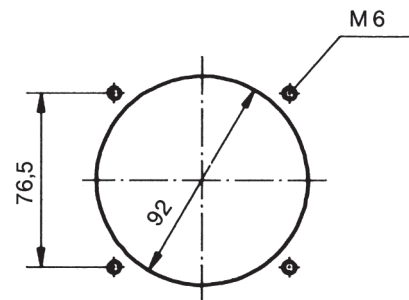
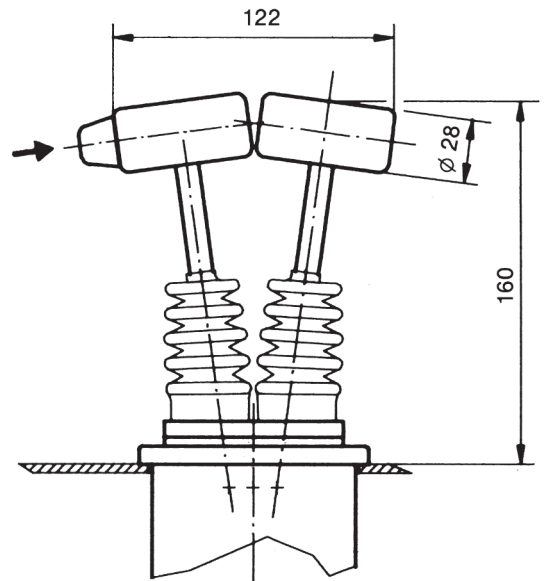
T = dead man's button
H = signal button
M = latch for mechanical zero interlock

Knob solid
D = push button

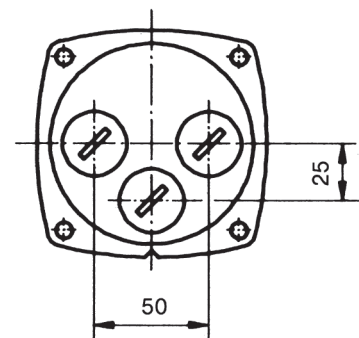
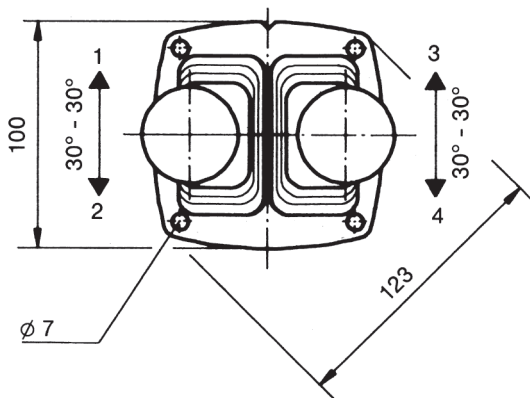
T-grip
D = push button



To build in:
direction 1-2
direction 3-4



Hole pattern



View x

