



Type V11LT-02Z+02Z-...

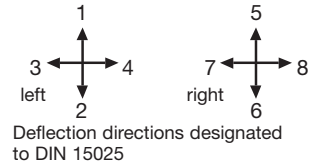
The multi-axis controller V 11 is a rugged switching device according IEC 947-5-1 EN 60947 DIN VDE 0660-200 for hoisting applications. The modular design enables the switching device to be used universally. The V 11 is resistant to oil, maritime climate, ozone and UV radiation.

**Contact complement 2 A 250 V AC 15 res. 1 A 24 V DC 13 (standard)
or 4 A 250 V AC 15 (special)**

Mechanical life 10 million (operating cycles)
Permissible ambient temperature Operation -40° C to +60° C
Storage -50° C to +80° C

Climate resistance
Damp heat constant DIN IEC 68 part 2-3
Damp heat cyclic DIN IEC 68 part 2-30
Degree of protection front IP 54 IEC 529 DIN 40050
Technical data see catalog 5/100
Description data see catalog 5/002

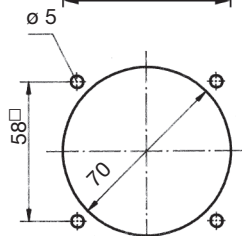
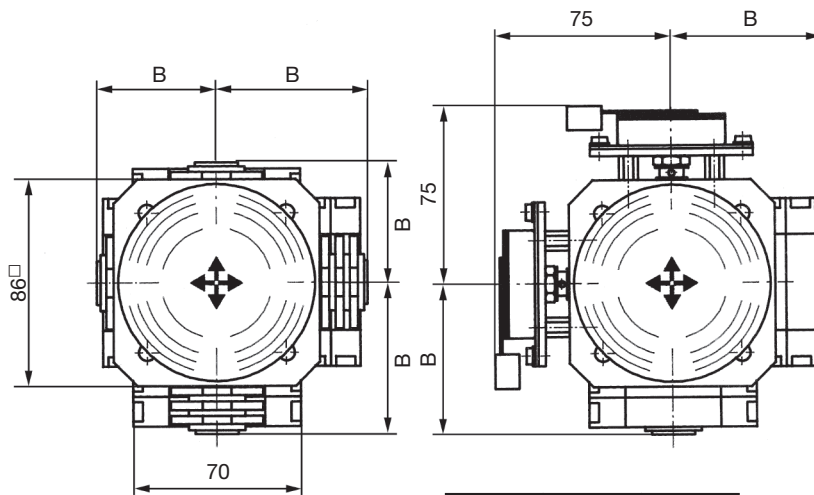
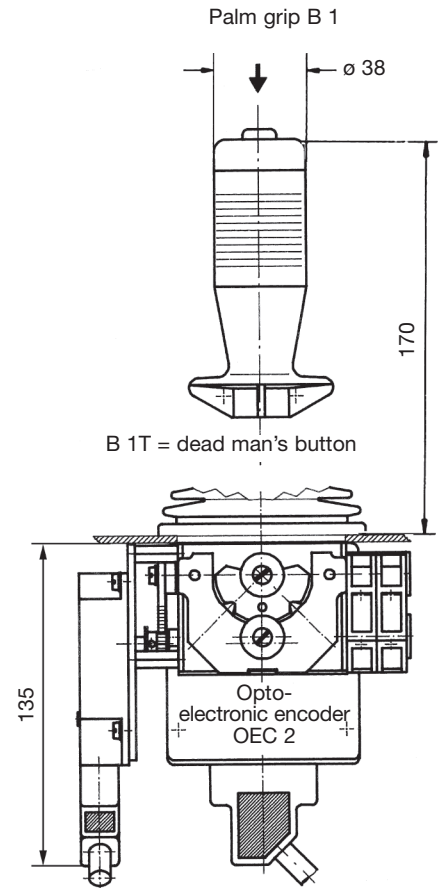
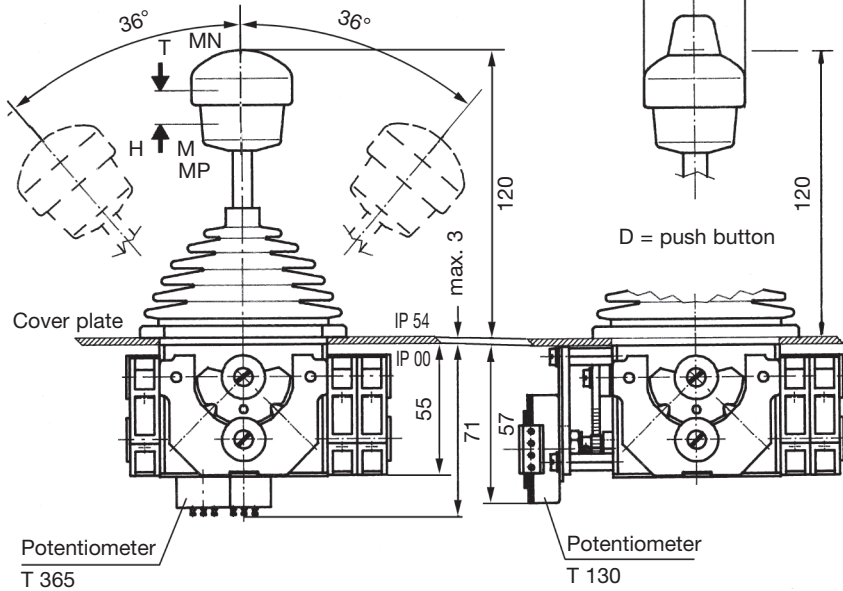
Spindle block with schematic representation of the master controller installation and deflection directions.
Version shown for left-hand side installation left
(right-hand side installation is mirror image).



Pos.	V 11.1	V 11	Type expansion		Weight gramm	Type	Price EURO	
1					400	V 11.1		
2								
3						500	V 11	
4								
5								
7.1	Multi-axis controller left	(dir. 1-2, 3-4)				L		
7.2	Multi-axis controller right	(dir. 5-6, 7-8)				R		
10	Gate cross-shaped	(prohibits diagonal shifting)			60	P		
11	Gate special-shaped	(e.g. H-gate)			60	PX		
20	Control-handle with knob solid							
21	Control-handle with latch for mechanical zero interlock							
21.1	by lifting				50	M		
21.2	by lifting, interlocking the gate or the joint bracket				60	MP		
21.3	by pushing down				50	MN		
21.4	Mechanical zero interlock with command devices see catalog 1/282							
22	Control-handle with dead man's button 1 NO				100	T		
23	Control-handle with signal button 1 NO				100	H		
24	Control-handle with push button 1 NO				110	D		
25	Control-handle with flat push button 1 NO				110	DV		
26	Control-handle with palm grip B 1				40	B 1		
27	Control-handle with palm grip B 1 with push button top 1 NO				60	B 1T		
28	Control-handle long or short							
28.1		-20 mm				S5		
28.2		+20 mm				S8		
29	More knobs, grips and T-grips with and without signal devices see catalog 1/280...							
30	Masterswitch (contact set) switching sequenc 4-0-4			No. of contacts 2	70	01		
31				4	130	02		
32	Direction 1-2 and 3-4 each 1 masterswitch			6	190	03		
33	Switching program according contact-arrangement MS... see catalog 5/001		A...					
34	or to your contact-arrangement							
38	Spring return in 0-position	(for each direction)			25	Z		
39	Friction brake adjustable	(for each direction)			20	R		
40	Potentiometer e.t.c. each masterswitch with mounted Conductive-plastic potentiometer T 365, with centre tap linear Life 10 ⁷ switching cycles resistance 2 x 5 kOhm, 0,5 Watt wiper current max. 1 mA		...P324		70	P		
41	Prepared for mounting potentiometer shaft 6 mm adjusting-angle 2 x 150°					(P)		
42	Prepared for mounting potentiometer e.t.c. adjusting-angle variable.					(P)		
43	more Potentiometer e.t.c. see catalog 1/240...		C..., P...					
50	Plastic housing I 160 x 240, masterswitch max. size 03				800	I		
52	More housing see catalog 1/350							
60	Indicating labels not engraved with 2 or 4 arrows							
61	Engraving, each 10 characters							
70	Command and indicating devices see catalog 1/360							



T = dead man's button
H = signal button
M = latch for mechanical zero interlock



Hole pattern

Type	No. of contacts	Dimension B
01	2	51
02	4	64
03	6	76

